



PT. INERSIA BERKAH SEMESTA



PT INERSIA BERKAH SEMESTA

ENGINEERING | PROCUREMENT | CONSTRUCTION



ABOUT COMPANY



PT INERSIA BERKAH SEMESTA (PT IBS) was founded at the beginning of 2023. It is a company engaged in the Trading of Materials and Industrial Spare Parts, where we work closely with several international manufacturers, particularly in the Tubing and Pipes industry. Both Carbon Steel, Stainless Steel, and Alloy Steel, or what is more commonly referred to as Exotics Material Alloy. PT IBS is also involved in Engineering Services, Engineering Design, Fabrication, Construction, and the Service Maintenance of industrial equipment. Similarly, new Industrial Plant / Factory planning, Power Plant, Food & Beverage Industry, Oil & Gas, Chemical Industry, and Mining planning are also included.

In this instance, PT IBS is expected to provide our clients with Reliable, Efficient, Competitive, and Flexible solutions. Our guiding principle is to provide quality services at competitive prices and turnaround times.

PT IBS is located in Surabaya, East Java, with a qualified team that is highly motivated and experienced in their respective fields in order to satisfy the qualifications, Standards, and Codes locally and internationally under Client requirements.

Establishing PT IBS is inseparable from the requirement for exotic materials, and Exotics Material Alloys. In addition, the demand for Fabrication Services, Services, and Maintenance is expanding significantly alongside the development of ever-more-advanced technology.

With the increasing construction of new factories, global competition, job creation, etc., this is where we unite our vision and mission to establish a local company that is connected to global material manufacturing companies.

VISION MISSION COMPANY

VISION

Being a local company capable of providing Goods and Services under ASME, ASTM, API, CEMA, NACE, NORSOK, JIS, DIN, and SNI standards, so that PT Inersia Berkah Semesta (IBS) is highly competitive and seeks to add value.

MISSION

- Being a company that continues to develop and advance to compete globally in the Engineering, Procurement, and Construction industry.
- Offering Customers contentment and added value





COMPANY LEGALITY

- NOTARIAL DEED** : Deed of establishment of PT INERSIA BERKAH SEMESTA by Notary & PPAT Nurmainah, S.H., M.Kn No.3 Dated 7 January 2023.
- SK MENKUMHAM RI** : Decree of the Minister of Law and Human Rights of the Republic of Indonesia Number AHU-0001271.AH.01.01 TAHUN 2023, Dated 7 January 2023.
- NIB** : Business Identification Number, No. 0701230826571, Dated 7 January 2023.
- SKD** : Domicile Certificate, Number: 400.12.3.2/073/436.9.13.5/2023, Dated 17 February 2023.
- SPPKP** : Taxable Entrepreneur Confirmation Letter, Number: S-10/PKP/KPP.110203/2023, Dated 26 January 2023
- SKT** : Registered Certificate, No: S-3S/KT/KPP.110203/2023, dated 7 January 2023.
- NPWP** : Taxpayer Identification Number, No: 62.359.427.2-605.000



POLICY

Occupational Safety Health and Environment (HSE)

PT IBS has safety as one of its major responsibilities. We have implemented the following quality policies;

- Accident prevention practices in accordance with international standards
- Safe working system
- Safe workplace
- High consistency with all applicable government regulations.

PT IBS provides leadership skills to all employees in both implementing safety procedures and developing safe working attitudes and habits. We accept and implement safety standards/regulations and measures. All of these requirements must be carried out by all personnel involved in all work especially in fabrication projects and installation projects that are on site and must be a top priority.

QUALITY

Quality is not a simple matter of reducing product defects but rather a comprehensive measure covering all aspects of the delivery process to the Client. IBS focuses its overall quality assurance programme on the implementation of procedures, systems and on-site controls.



COMMITMENT

PT. IBS is committed to making a positive contribution by anticipating and attempting to meet customer requirements and providing high-quality services at competitive prices.

PT IBS strives to expand by providing services to Oil and Gas Companies, Petrochemical Industries (Fertiliser Plants), and Mining by utilising a highly experienced and motivated team. For plant optimisation projects involving pipework, mechanical, equipment, electricity generation, engineering, and manufacturing.

PT IBS recognises that, to serve international enterprises, we must provide world-class service and product quality. High-quality engineering design, fabrication, and construction are the foundation of providing excellent services and products to meet this need.

BUSINESS & SERVICE

PT IBS is engaged in Material Trading, We are connected with National and International Manufacturing Companies or Mill to meet the needs of the domestic market (industries located in the country).

PIPA



Pipe Material: Special Materials (Exotics Material Alloy), Carbon Steel, Stainless Steel, AlloySteel, Incaloy Steel and others

Pipe type: Welded or Seamless.

Thickness: SCH 10, SCH20, SCH40, SCH60, etc.

Types of material according to standard code
ASTM ASME, API, JIS, SNI

Example

- o ASTM A53 Gr A
- o ASTM A53 Gr.B
- o ASTM A53 Gr.C
- o DN15-DN300
- o ASTM A312 Seamless Steel Round Tube
- o DN15-DN300
- o ASTM 106A
- o ASTM 106B
- o 42CrMo
- o ASTM A312
- o API 5L Gr B
- o API 5L PSL2 GR. B Seamless Steel Tube

PIPE ACCESSORIES (CONNECTIONS / FITTINGS)

Three types of fittings, including

- 1) Forged Fittings which most of the ends are Beveled
- 2) Forged Fittings with Socket & Threaded end
- 3) Cast Fittings that are not used in Process Piping



The concessions include: Straight Tee, Reducing Tee, Long Elbow, Short Elbow, Concentric Reducer and Eccentric Reducer, Cap/End.

FLANGE

A flange is a bolted connection between two pieces of pipe, apparatus, or valves. They are available in a variety of diameters, pressures, ratings, and shapes to accommodate design specifications.



There are six basic types of flanges:

1. Blind Flange
2. Lap Joint Flange
3. Slip on Flange
4. Socket Weld Flange
5. Threaded Flange
6. Welding Neck Flange

Except for the lap joint flange, which has a flat flange face, all of these flanges have a convex flange face.

In addition, there are also a number of Special Flanges:

1. Orifice Flanges: Orifice Slip-On Flange – Orifice Socket Flange – Orifice Threaded Flange – Orifice Weld Neck Flange.
2. Standard Connections: Long Weld Neck Flange – Heavy Barrel Flange – Full Barrel Flange.

3. Ring Type Joint Flanges: RTJ Blind Flange – RTJ Slip-On Flange – RTJ Threaded Flange – RTJ Weld Neck Flange.
4. Expander Flange.
5. Reducing Flange.
6. Studding Outlet: Flat Bottom Mount – Shell/Head Mount – Tangential Mount.
7. Weldoflange / Nipoflange.
8. Orifice plate (part for orifice flange).
9. Spectacle bline (part for flange).

SEAMLESS BOILER TUBE

This material is used for high-pressure and high-temperature media above 120 degrees Fahrenheit. It is also called Special Pipe Material for Boilers, Heat Exchangers and high-pressure/pressure installations.

OUTER DIAMETER (OD) 10.2 - 139.7 mm
(from 26.9 mm manufactured as hot rolled)

WALL THICKNESS (WT) 0.5 - 16.0 mm (from
2.6 mm manufactured as hot rolled)



Manufacturing Seamless Boiler Tube Process

- ASTM A 210 – A&C Specification for Seamless Medium-Carbon Steel Boiler and Superheater Tubes
- ASTM A 213 - T-5, T-9, T-11, T-22, T-91 Specification for Seamless Alloy-Steel Boiler, Superheater and Heat Exchanger Tubes

OTHER TYPES OF MATERIAL



Product Example SA 210 Gr A1

- ASME SA106 Gr A, Gr B, Gr C
- ASME SA 179, SA 192,
- ASME SA 210, SA 210 Gr A1, SA209M, T1, T1a
- ASME SA213 T2, T5, T9, T11, T12, T22
- ASME SA335, P2, P5, P11, P12, P22, P91
- ASTM 333 Gr1, Gr3, Gr4, Gr6, Gr7, Gr8, Gr9, Gr10, Gr11
- DIN 17175:ST35.8, ST45.8, 15Mo3, 13CrMO44

We also offer Plate Sheet material of the following varieties:

- **STAINLESS STEEL:**

- SUS 201, SUS 304, SUS 309, SUS 310, SUS 316, SUS 316L, SUS 630, SUS 904, SUS904L, SUS2205, DUPLEX

- **CARBON STEEL:**

- ASTM A283 GRADE C
- ASTM A285 GRADE C
- ASTM A516 GRADE 70
- ASTM A36 / JIS SS400

- **ALLOY STEEL**

EN 10083-3 Alloy Steel Plate Standar: EN 10083-341Cr4, 25CrMo4, 34CrMo4, 42CrMo4

Treatment: Hot Rolled, Annealed, Normalized dan Tempered.

According to ASTM A 387 Gr 12, A570 Gr D, A570 GrA, A120, etc

Including Aluminium and Titanium alloy steel



EXOTIC MATERIAL

AERO SPACE MATERIAL GROUP

Nickel & Nickel Alloys

- o INCONEL Alloy 625
- o INCONEL Alloy 718
- o INCONEL Alloy Hx
- o INCONEL Alloy X-750
- o NIMONIC Alloy 75
- o NIMONIC Alloy 80A
- o NIMONIC Alloy 90
- o NIMONIC Alloy 263
- o NILO Alloy 36
- o NILO Alloy 48
- o UDIMET Alloy L-605
- o UDIMET Alloy 188
- o WASPALOY

Titanium & Titanium Alloys

- o Titanium Grade 2
- o Titanium Grade 5 (6A I4V)

Special Stainless Alloys

- o 13-8Mo
- o 15-5PAH
- o 17-4PH
- o 1.4044.6
- o 1.4546.9
- o A-286



AERO SPACE MATERIAL GROUP



Titanium & Titanium Alloys

- o Titanium Grade 4
- o Titanium Grade 5
- o Titanium Ti-6Al-7Nb

POWER GENERATION MATERIAL GROUP

Super Alloys

- o Alloy 600 / UNS N06600
- o Alloy 601 / UNS N06601
- o Alloy 617 / UNS N06617
- o Alloy 718 / UNS N06002
- o Waspaloy / UNS N07001
- o Alloy 75 / UNS N06075
- o Alloy 80A / UNS N07080
- o Alloy 81
- o Alloy 90 / UNS N07090
- o Alloy 263 / UNS N07263
- o Nickel 230 / UNS N06230



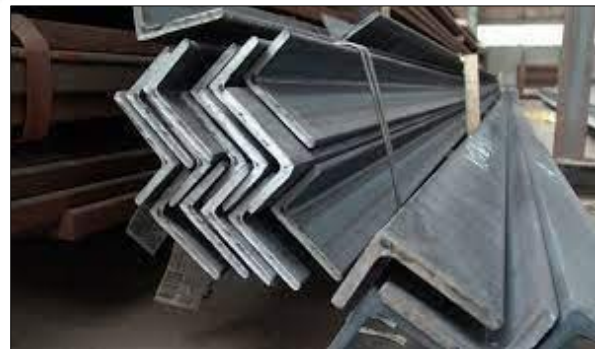
Rod/Bar, Hot Rolled Plate, Cold Rolled Sheet, Seamless Pipe/Tube, Welded Pipe/Tube, Wire

Various Industries Material Group						
Corrosion Resistant	201	400	600	625	625/626	800H
	800HT	825	C-276	C22		
Heat Resistance	90	600	601	625	625/626	800H
	800HT					
Low Expansion	36	42	48			
Titanium / Titanium Alloy	Grade 1	Grade 2	Grade 3	Grade 4	Grade 5	



CONSTRUCTION MATERIALS

H-Beam, Angle L, IWF, UNP, CNP, RoundBar, Roundbar for Civil Building Fixings, etc.



EQUIPMENT-EQUIPMENT PENDUKUNG MECHANICAL

- Valve
- Pump
- Compress water
- Motorize
- Bolt & Nuts
- Belt
- Pneumatic Accesoris
- Sill & Packing

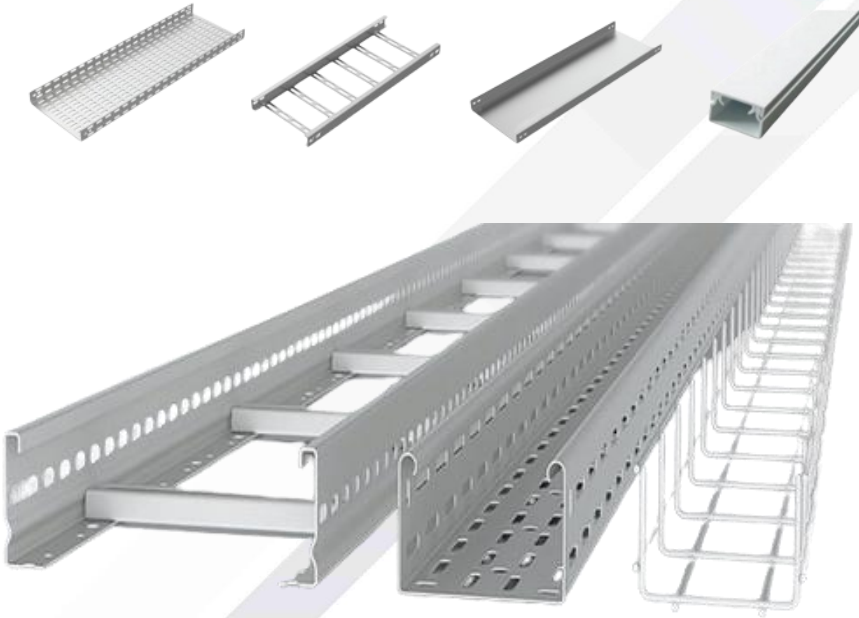
PRODUCT REFERENCE CASTING

Description	Figure I Invesstemnt Casting	Description	Figure II Invesstemnt Casting
Product : Intermediate Material : 1.4581 Weight : 6.5 Kg Lengt : 50 mm Diameter : 140 mm Application : Stainless Steel Pump		Product : Beam Support Material : BS 3100 Weight : 14,7 Kg Length : 463 mm Diameter : 305 mm Application : Part Machinery	
Product : Central Body of Material : 1.4408 Weight : 17 Kg Lengt : 172 mm Diameter : 230 mm Application : Stainless Steel Pump		Product : Shoe Crane Material : AISI 4140 Weight : 30 Kg Lengt : Diameter : Application : Crawler Crane Project : Vico Indonesia	
Product : Close Impeller Material : 1.4408 ; 1.4517 ; 1.4581 Weight : 10 Kg Lengt : 35 mm Diameter : 270 mm Application : Stainless Steel Pump		Product : Bucket Teeth Material : Cs 001 Weight : Lengt : Diameter : Application : Crusher BatuBara Project : Bukit Asam	
Product : Housing Support Material : Stellite X 45 = Hastelloy X Weight : 27.5 Kg Length : -- Diameter : -- Application : Part of Turbin Project : Indonesia Power		Product : Pump Housing Material : SS Duplex Weight : Length : Diameter : Application : Stainless Steel Pump	
Product : Vacuum Casing Material : 1.4408 Weight : 8.5 Kg Length : 93 mm Diameter : 240 mm Application : Stainless Steel Pump		Product : Pipe Material : Cast Iron + Cr Weight : - Length : 1675 mm Diameter : 125 mm Application : Acid Plant Project : Smelting	
Product : Impeller P 107 Material : 17-4 PH Weight : 45 Kg Length : 190 mm Diameter : 450 mm Application : Turbine Pump Project : Petrokimia Gresik		Product : Elbow Material : Cast Iron + Cr Weight : 75 Kg Length : 305 mm Diameter : 304,8 mm Application : Acid Plant Project : Smelting	

PRODUCT REFERENCE CASTING

Description	Figure I Investment Casting	Description	Figure II Investment Casting
<p>Product : Spiral Gear Material : Alpha Bronze Weight : 1.5 Kg Length : Diameter : Application : Part Machine</p>		<p>Product : Bell Suction Material : SS Super Duplex Weight : 400 Kg Length : 460,1 mm Diameter : 965,2 mm Application: Sea Water Pump Project : Smelting</p>	
<p>Product : Spiral Pump Housing Material : A354 Weight : 0.350 Kg Height : 74 mm Diameter : - Application : Industrial Pump</p>		<p>Product : Bowl Material : SS Super Duplex Weight : 600 Kg Length : 651,4 mm Diameter : 851,1 mm Application : Sea Water Pump Project : Smelting</p>	
<p>Product : Close Impeller Material : SS Duplex Weight : 50 Kg Length : 35 mm Diameter : 335 mm Application : Stainless Steel Pump Project : Smelting - Acid Plant</p>		<p>Product : Close Impeller Material : SS Super Duplex Weight : 120 Kg Length : 250,8 mm Diameter : 701 mm Application : Sea Water Pump Project Smelting</p>	
<p>Product : Dam Block Plan 47 Material : Copper Weight : 4.3 Kg Length : 219,9 Application: Part Machinery Project : PT. Smelting</p>		<p>Product : Bland Blasting Material : 27 HRC Weight : 6,25 Kg Length : Diameter : Application : Machine Part</p>	
<p>Product : Close Impeller Material : SS316L Weight : 8.5 Kg Length : Diameter : Application : Stainless Steel Pump</p>		<p>Product : Fender Material : BS 3100 Weight : 58 Kg Length : 1250 Diameter : 166 Application: Lifting Vehicle Part</p>	
<p>Product : Impeller Pump LPBVP Material : SS 1.4313 Weight : 9.75 Kg Length : 74 mm Diameter : 300 mm Application: Stainless Steel Pump</p>		<p>Product : Housing Junction Material : BS 3100 A4 Weight : 15 Kg Length : Diameter : Application : Machine Part</p>	

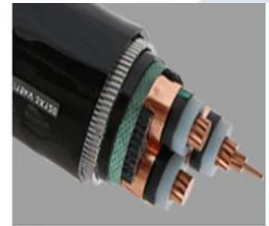
Electrical Equipment



Electric Wires



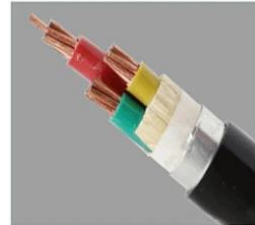
Control Cables



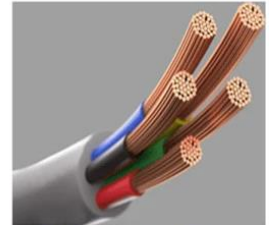
Power Cables



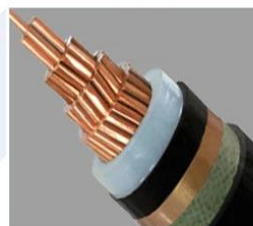
Overhead Cables



Mine Cables



PVC Insulated Cables



XLPE Insulated Cables



Rubber Insulated Cables



Pre-fab Branch Cables



SERVICES

In an endeavour to provide excellent service, PT IBS also offers a variety of service products for engineering design, fabrication, service and maintenance, installation, and construction.

Engineering Design work based on the customer's desired design for engineering requirements ranging from general arrangements, mechanical, and structural drawings to fabrication supervision and quality control.

Fabrication labour includes Structural, Bending Pipe, Plate labour, and Pressure Vessel Construction, among others.

Fabrication labour includes Structural, Bending Pipe, Plate labour, and Pressure Vessel Construction, among others.

- o Piping, Tubing
- o Pressure Vessel,
- o Tank,
- o Process Equipment Skid,
- o Material Handling
- o Conveying, dll

Each of our work mentioned above entails personal experience and substantial responsibility. Especially occupational safety, health, and environmental awareness (K3L), beginning with yourself.

Boiler Maintenance, Repair, and Servicing

We provide comprehensive services for the maintenance and repair of your industrial boilers. With the support of an experienced technical team and complete equipment, we are ready to ensure that your boilers continue to perform optimally and efficiently



Our Services Include:

- General overhaul of boilers
- Pipe cleaning (chemical and mechanical cleaning)
- Inspection and replacement of boiler tubes (retubing)
- Calibration and servicing of instrumentation
- Non-destructive testing (NDT) (UT, PT, RT)
- Refractory repair and insulation
- Fabrication and installation of replacement parts
- Setting and tuning of burners and control systems

Our Advantages:

- Performed by certified technicians
- Compliant with ASME & SNI standards
- 24-hour technical support
- Complete & transparent reports



Dust Manajemen (Presure Water Scrubber System)

Pressure Water Scrubber Technology – Up to 99% Efficiency

A Smart Solution for Controlling Air Pollution in Your Industry!

Our Venturi Water Scrubber system is specifically designed to efficiently capture and eliminate fine dust particles in the air. With high water pressure and a precise venturi system, dust is scrubbed to nearly 99% clean before being released into the atmosphere.



Key Features:

- Venturi Scrubbing technology for maximum efficiency
- Reduces dust particle emissions to $< 10 \text{ mg/Nm}^3$
- Modular design – easy integration into existing systems
- Easy maintenance and stable operation
- Environmentally friendly, no additional chemicals

Benefits for you:

- Meets air emission quality standards
- Keeps the work environment clean and healthy
- Improves the company's image as an environmentally friendly industry player
- Reduces the risk of environmental sanctions and complaints from residents due to dust particles falling on the surrounding environment



The image above shows the difference between a boiler that uses a water scrubber system (white smoke) and a boiler that does not use a water scrubber (black smoke). Black smoke is dust particles carried into the air from the sugar factory's chimney.

FACILITIES AND PRODUCTS

PT IBS has an adequate workshop and sufficient work apparatus to support its operations.

EQUIPMENT LIST

1. Squeezing Machine
2. Bending Machine
3. Swaging Machine
4. Hydraulic Tube Machine
5. Lathe Machine
6. Drilling Machine
7. Roll Plate Machine
8. Press Break Machine
9. Scarfing Tube and Pipe Machine
10. Gas Cutting
11. Dies Bending
12. Gang Band
13. CNC Lathe
14. CNC Scrap
15. FIN Decoil
16. Automatic Wall Panel Welding Machine
17. Plasma Cutting
18. GTAW, GMAW, SMAW welding machine

MACHINERY AND EQUIPMENT PHOTOS

PT IBS has sufficient workshop space and quality working apparatus to facilitate all of its operations.



Bending Machine (Rotary Draw Bending)



Dies Squashing Sizing & Follow bar



Hydraulic Squashing Sizing Press Machine



Roll Plate Machine



Welding Wall Panel Machine



Pipe Roll Machine



Radial drilling Machine



Various Sizes of Bending Dies

WORKSHOP AREA



JOBS EVER DONE

PT IBS has sufficient workshop space and quality working apparatus to facilitate all of its operations.



(Opening Tube Boiler)



(Side & Right Wall Panel Tube Boiler)



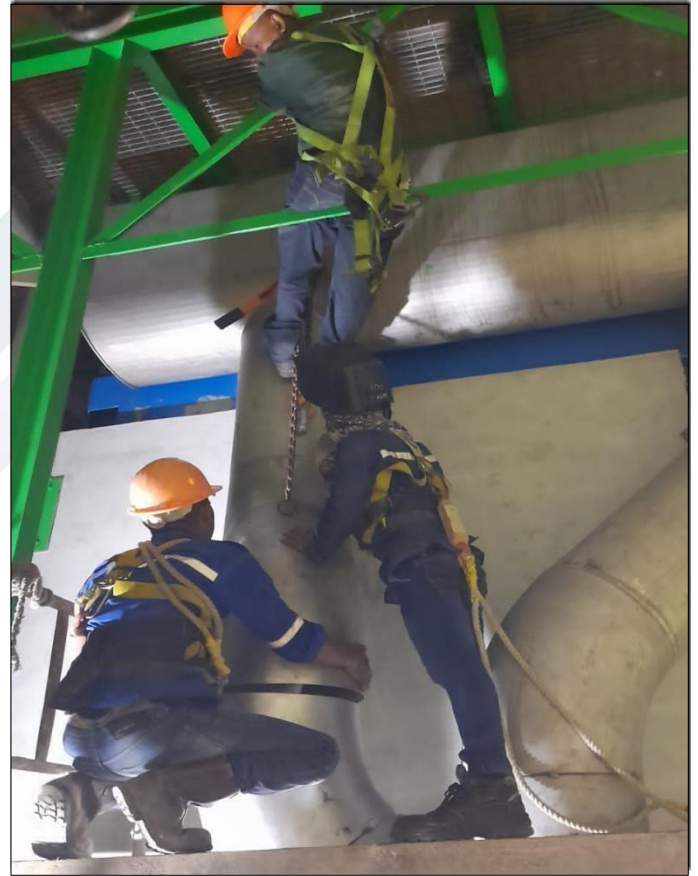
(Process Piping Installation)



(Piping Installation)



(Piping & Welding Installation)



(Piping Instalation)



(QC Inspeksi After Instalation)



(Piping Instalation)



(PKT Kaltim 5 Pigtail Inlet Fabrication)



*(U-Bend bending fabrication
R20 mm & R 28 mm)*



(Tube Sheet Boiler Drilling Process)



*(Screen Hopper Fabrication
coal UNIT PLTU)*



(CNG system.piping installation plan)



(Piping & Pump Intallation)

Automation: Mechanical, Electrical, Instrument & Control

We are also highly dedicated to instrumentation, control systems, and electrical engineering. We design, develop, install, manage, and maintain instrumentation equipment related to machinery systems and production processes to ensure they run effectively, efficiently, and safely.

Supervisory Control And Data Acquisition (SCADA)

A control system architecture consisting of computers, data communication, and graphical user interfaces (GUI) for high-level process monitoring and control management. Connected to PLCs, field instruments, and remote telemetry units (RTUs).



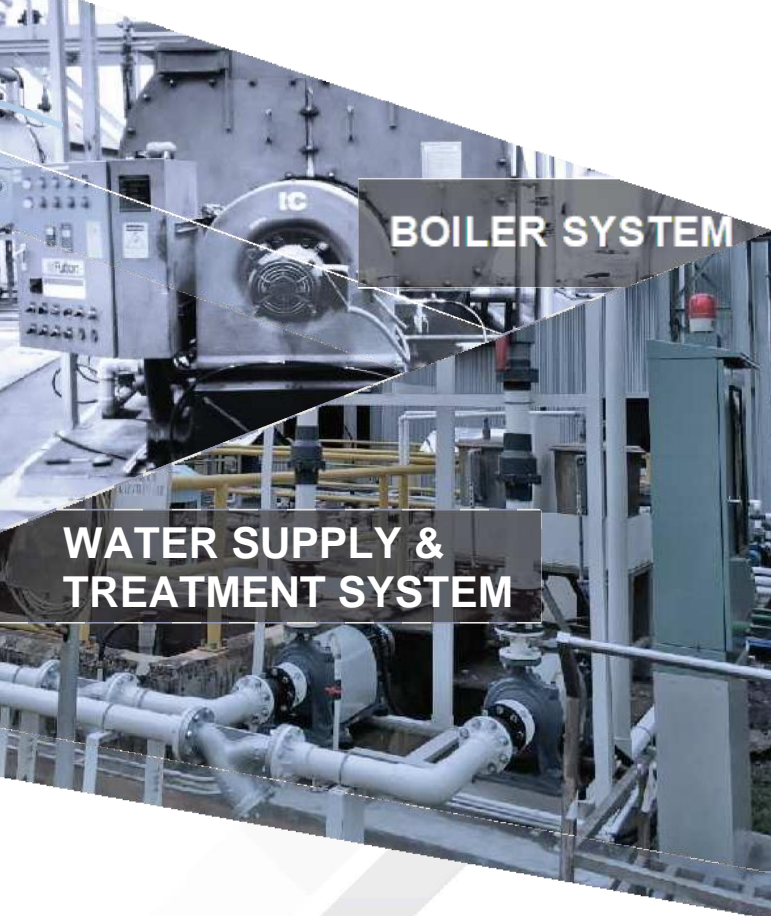
Process Weighing

A weighing control system solution that covers a wide range of important data requirements in the production process, whether it be a batch system or continuous weighing.

Process Control System

From power plants to chemical industries, we provide DCS and PLC-based control system platforms that have been proven and trusted for many years.





BOILER SYSTEM

WATER SUPPLY & TREATMENT SYSTEM

Water Supply & Water Treatment Control System

Engineering and installation of control systems for drinking water and wastewater treatment plants. Integrated with DCS/SCADA systems

Mechanical Construction & Process Piping Installation

Various mechanical services including engineering design and equipment erection. We can also handle electrical and mechanical building work, steel structure work, equipment installation, piping, and painting.

Boiler Control System, Retrofit/Revitalization

Manufacture, inspection, and repair of boiler control system components to improve efficiency and prepare the system for long-term use.

Field Instrumentation & Data Acquisition System (DAS)

A data acquisition system is a collection of software and hardware that enables the measurement or control of physical characteristics of something in the real world. It consists of DAQ hardware, sensors, and actuators.



FIELD INSTRUMENTATION & DATA ACQUISITION SYSTEM



MECHANICAL CONSTRUCTION & PROCESS PIPING INSTALLATION



Our services



Heavy Equipment Parts and Service Industry

We provide spare parts and repair services for heavy equipment such as cranes, excavators, bulldozers, and others. We are ready to assist you with a wide range of heavy equipment spare parts.

Our company consistently focuses on heavy equipment, helping you solve problems and maintain your heavy equipment.



Marine Engine Parts and Service, Throttle System Gear Box and Propeller.

Offering optimal service, our team has extensive experience in the field. By providing the necessary spare parts and components for marine diesel engines such as (Caterpillar, Cummins, Yanmar, MAK, Wartsila, and others), our company can also address issues related to marine diesel engines for onshore, offshore, and other maritime applications. This enables us to assist in identifying spare parts and providing appropriate repair services.

DAFTAR PEKERJAAN / PROYEK PT. INERSIA BERKAH SEMESTA			
NO	DESCRIPTION	CUSTOMER	USER
1	Pembuatan Dies dan Jasa Bending Tube	PT. Laras Group Engineering	PT. TEF / PT. Smelter Indonesia
2	Jasa Bending Tube	PT. Laras Group Engineering	PT. TEF / PT. Smelter Indonesia
3	Round Bar For Grounding SS316Ti	PT. Kaltim Methanol Industri	PT. Kaltim Methanol Industri
4	Kawat Las	PT. Kaltim Nusa Etika	PT. Pupuk Kalimantan Timur
5	Seamless Tube SA210 GR A1	PT. Pupuk Kalimantan Timur	PT. Pupuk Kalimantan Timur
6	Seal Rubber 25 x 50 x 18 mm	PT. Pupuk Kalimantan Timur	PT. Pupuk Kalimantan Timur
7	Kawat Las	PT. Kaltim Nusa Etika	PT. Pupuk Kalimantan Timur
8	Kawat Las PVC dan Butterfly Valve	PT. Pupuk Kalimantan Timur	PT. Pupuk Kalimantan Timur
9	Round Bar AISI 4340 dia 180 mm x 2 Meter	PG Tjoekir - Jombang	PG Tjoekir - Jombang
10	Jasa Bending Tube 45 Degree	PT. Laras Group Engineering	PT. TEF / PT. Smelter Indonesia
11	Stud Bolt M45 x 350 mm, B16 with Nut	PT. Kaltim Nusa Etika	PT. Pupuk Kalimantan Timur
12	Plate, Kawat Las, Bolt	PT. Kaltim Methanol Industri	PT. Kaltim Methanol Industri
13	Pipa SS304 Sch80 1"x 6 Meter	PT. Kaltim Nusa Etika	PT. Pupuk Kalimantan Timur
14	Steam Trap 1 Inch, 6 Pcs	PT. Pupuk Kalimantan Timur	PT. Pupuk Kalimantan Timur
15	Kawat Las ER 80S B2, ER410, ER2209	PT. Kaltim Nusa Etika	PT. Pupuk Kalimantan Timur
16	Kawat Las Deloro Stellite Alloy 1 dan 6	PT. Kaltim Nusa Etika	PT. Pupuk Kalimantan Timur
17	Anti Preming Steam Drum Boiler	NMF PT. SGN PG Bunga Mayang	PT. Sinergi Gula Nusantara
18	Seal Rubber Valve DN 850	NMF PT. SGN PG Djombang Baru	PT. Sinergi Gula Nusantara
19	Pipa A106 Sch60 16"x 6 Meter	PT. Pupuk Kalimantan Timur	PT. Pupuk Kalimantan Timur
20	Machine Bolt M14 x 100MM	PT. Pupuk Kalimantan Timur	PT. Pupuk Kalimantan Timur
21	Pipa SS310 dan SS304H	PT. Pupuk Kalimantan Timur	PT. Pupuk Kalimantan Timur
22	Plate A387 GR22	PT. Harmoni Indojoya Energi	PT. Harmoni Indojoya Energi
23	Pipa A106B 1"x6M SCH80	PT. Pupuk Kalimantan Timur	PT. Pupuk Kalimantan Timur
24	Roller Rotary Screen SS304	PT. Pupuk Kalimantan Timur	PT. Pupuk Kalimantan Timur
25	Rubber Butterfly Valve 1450	PT. Sinergi Gula Nusantara	PT. Sinergi Gula Nusantara
26	Studbolt M16 x 70 mm, B7 with Nut	PT. Pupuk Kalimantan Timur	PT. Pupuk Kalimantan Timur
27	Pipa 3" SCH10S & 1½" SCH40S 304L	PT. Pupuk Kalimantan Timur	PT. Pupuk Kalimantan Timur
28	Expanded Metal F3035	PT. Samudra Refractori Perkasa	PT. Samudra Refractori Perkasa
29	Bolt 1½in dan Screw M4x65mm SS304	PT. Pupuk Kalimantan Timur	PT. Pupuk Kalimantan Timur
30	Kawat Las AWS A5.15 dia 2,6 mm CIN-2	PT. Kaltim Nusa Etika	PT. Pupuk Kalimantan Timur
31	Hollow Bar 1in x 2in x 2ft Bronze SAE 660	PT. Pupuk Kalimantan Timur	PT. Pupuk Kalimantan Timur
32	Round Bar SUS 316 Dia 18In x 170 mm	PT. Pupuk Kalimantan Timur	PT. Pupuk Kalimantan Timur
33	Asement Boiler dan Desain	PG Djombang Baru - Jombang	PG Djombang Baru - Jombang
34	Asement Ash Collecting System dan Desain	PG Pesantren - Kediri	PG Pesantren - Kediri
35	Amerkleen M80 dan Amerkool M81	PT. Kaltim Daya Mandiri	PT. Kaltim Daya Mandiri
36	Swifel Eye Bolt M10 & M20	PT. Pupuk Kalimantan Timur	PT. Pupuk Kalimantan Timur
37	Tube A210 GrA1 OD 60 x 6,5 x 6 Meter	PT. Pupuk Kalimantan Timur	PT. Pupuk Kalimantan Timur
38	Pemb Dies dan Jasa Bending Tube	PT. Multi Bangun Sejahtera	PT. Pupuk Kalimantan Timur
39	Fabrikasi Hairpin Inlet Pigtail	PT. Multi Bangun Sejahtera	PT. Pupuk Kalimantan Timur
40	Pembuatan Venturi Assembly	PG Pesantren - Kediri	PT. Sinergi Gula Nusantara
41	Perforated Plate 1.25 x 963 x 3242 mm	PT. Pupuk Kalimantan Timur	PT. Pupuk Kalimantan Timur
42	Rubber Base	PT. NMF	PT. NMF
43	Flange 4 Inch Sch160	PT. Pupuk Kalimantan Timur	PT. Pupuk Kalimantan Timur
44	Pipa 3 Inch Sch40 SS310	PT. Pupuk Kalimantan Timur	PT. Pupuk Kalimantan Timur

45	Mesin Biochar Carbonizer	PT. WasteX Technology Indonesia	PT. WasteX Technology Indonesia
46	Pipa 3,5 Inch P11	PT. PLN (Persero) Pusharlis	PT. PLN (Persero) Pusharlis
47	Jasa Install Flowmeter	PT. Lesaffre	PT. Lesaffre
48	Pipe, Fittings & Ring Joint Gasket	PT. Pupuk Kalimantan Timur	PT. Pupuk Kalimantan Timur
49	Bolt and Nut	PT. Pupuk Kalimantan Timur	PT. Pupuk Kalimantan Timur
50	Wire Mesh, Lem Epoxy, Ring Join Gasket, Pipa	PT. Kaltim Nusa Etika	PT. Kaltim Nusa Etika
51	Pembuatan Warehouse	PT. WasteX Technology Indonesia	PT. WasteX Technology Indonesia
52	Amerkleen M80 Pad	PT. KDM Argo Energy	PT. Kaltim Daya Mandiri
53	Test Material	PT. Kencana Zafira	PT. Kencana Zafira
54	Bolt and Nut	PT. Pupuk Kalimantan Timur	PT. Pupuk Kalimantan Timur
55	Nut TTV-441	PT. Kaltim Nusa Etika	PT. Pupuk Kalimantan Timur
56	Nut TTV-441	PT. Kaltim Nusa Etika	PT. Pupuk Kalimantan Timur
57	Elbow A234WPB 20 Inch	PT. Kaltim Nusa Etika	PT. Pupuk Kalimantan Timur
58	Elbow dan Pipe	PT. Pupuk Kalimantan Timur	PT. Pupuk Kalimantan Timur
59	Additional Nut TTV-441	PT. Kaltim Nusa Etika	PT. Pupuk Kalimantan Timur
60	Amerkleen M80 Pad dan DriPak 2000	PT. KDM Argo Energy	PT. Kaltim Daya Mandiri
61	Seamless Tube ASTM A210	PT. Pelangi Lintas Sejahtera	PT. Pelangi Lintas Sejahtera
62	Seamless Tube SA213 Grade T91 dan T22	PT. Kaltim Daya Mandiri	PT. Kaltim Daya Mandiri
63	Seamless Tube Inconel Alloy 601H	PT. Pupuk Kalimantan Timur	PT. Pupuk Kalimantan Timur
64	Seamless Tube Inconel Alloy 601H	PT. Pupuk Kalimantan Timur	PT. Pupuk Kalimantan Timur
65	Elbow dan Concentric Reducer	PT. Pupuk Kalimantan Timur	PT. Pupuk Kalimantan Timur
66	O-Ring dan Machine Bolt M33	PT. Petrokimia Gresik	PT. Petrokimia Gresik
67	Studbolt dan Nut M36	PT. Pupuk Kalimantan Timur	PT. Pupuk Kalimantan Timur
68	U Bolt 4 Inch dan Washer	PT. Pupuk Kalimantan Timur	PT. Pupuk Kalimantan Timur
69	Elbow 1 In F11	PT. Pupuk Kalimantan Timur	PT. Pupuk Kalimantan Timur
70	Elbow WP304 dan Flange F304 28 Inch	PT. Pupuk Kalimantan Timur	PT. Pupuk Kalimantan Timur
71	Reducer 12 x 8 Inch dan Elbow 12 Inch WP304	PT. Pupuk Kalimantan Timur	PT. Pupuk Kalimantan Timur
72	Studbolt dan Nut 3,5 Inch	PT. Kaltim Nusa Etika	PT. Pupuk Kalimantan Timur
73	Machine Bolt M22 dan Screw M10 & M12	PT. Pupuk Kalimantan Timur	PT. Pupuk Kalimantan Timur
74	Machine Bolt M24 dan Studbolt 7/8 Inch	PT. Pupuk Kalimantan Timur	PT. Pupuk Kalimantan Timur
75	Bolt dan Screw	PT. Pupuk Kalimantan Timur	PT. Pupuk Kalimantan Timur
76	Pipe, Elbow, Cap dan Flange 28"	PT. Pupuk Kalimantan Timur	PT. Pupuk Kalimantan Timur
77	Pipa 42 Inch G3010 SS400	PT. Kaltim Parna Industri	PT. Kaltim Parna Industri
78	180 Deg U-Bend dan Pipe 321H	PT. Kaltim Parna Industri	PT. Kaltim Parna Industri
79	Ventury Scrubber	NMF PT.SGN PG DB	PG. Djombang Baru
80	Pipa 34 Inch SCH 10S TP304	PT. Pupuk Kalimantan Timur	PT. Pupuk Kalimantan Timur
81	Stud Bolt 3-1/2 Inch x 730 mm	PT. Pupuk Kalimantan Timur	PT. Pupuk Kalimantan Timur
82	Ventury Scrubber	NMF PT.SGN PG DB	PG. Pesantren Baru
83	Ventury Scrubber	NMF PT.SGN PG DB	PG. Lestari
84	Pipa 20" dan Red Tee 30" x 20"	PT. Kaltim Parna Industri	PT. Kaltim Parna Industri
85	Tee 16" dan Flange 8" 304L	PT. Kaltim Amonium Nitrat	PT. Kaltim Amonium Nitrat
86	Plain Seal V-Ring NBR	PT. Pupuk Kalimantan Timur	PT. Pupuk Kalimantan Timur
87	Studbolt dan Gasket	PT. Pupuk Kalimantan Timur	PT. Pupuk Kalimantan Timur



ISO 9001
2015



ISO 14001
2015



ISO 45001
2018

**Satisfied Your Needs
With Competitive Price
High Quality Product & Services**



PT INERSIA BERKAH SEMESTA

**ENGINEERING | PROCUREMENT | CONSTRUCTION
FABRICATION | MATERIAL INDUSTRIAL SUPPLY**

Phone

082299000561

Email

admin@inersiaberkah.co.id

Website

<https://inersiaberkah.co.id>

Address

Graha Pena Building floor 18th
R1803 Jl.Frontage Achmad Yani
No.88 Ketintang, Gayung,
Surabaya, East Java 60231